



## **Pacific Empire Provides Exploration Update and Retains Atlas Drilling for Diamond Drilling at Jean Marie**

**May 26, 2022 - Vancouver, BC, Canada** - Pacific Empire Minerals Corp. (TSXV: PEMC) (OTCQB: PEMSF) (“Pacific Empire”, “PEMC” or the “Company”), a British Columbia copper explorer, is pleased to provide an exploration update and to report that it has retained Atlas Drilling Ltd. of Kamloops British Columbia for diamond drilling at its Jean Marie property this summer. In addition, the Company is pleased to announce that it has finalized drill targets at its flagship Jean Marie copper porphyry project, located in north-central British Columbia.

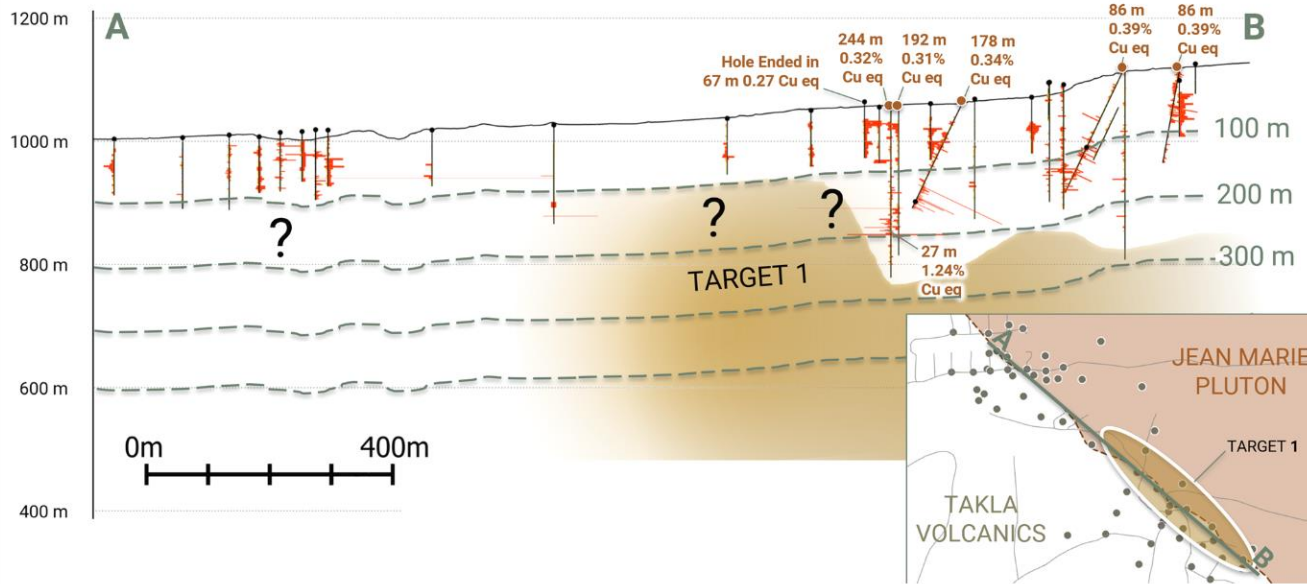
During 2021, PEMC completed a comprehensive exploration program at Jean Marie that was designed to incorporate all existing historical data on the property with data collected during the 2020 and 2021 exploration programs. As a result, PEMC has delineated 2 high priority drill targets for diamond drilling during the 2022 exploration season.

Brad Peters, President and CEO of Pacific Empire commented, *“The Jean Marie project has drill-proven potential to host a significant copper discovery. Our initial objective is to test below shallow historic drilling at Target 1 where new geophysics suggests this zone extends at depth, dipping to the east. Our interpretation is that there is a copper porphyry centre at depth and that intervals encountered in shallow drilling bodes well for high grades at depth. One of the most intriguing targets is Target 2 which is the location of the most significant geochemical anomaly on the property. Our work during 2021 suggests this anomaly is till transported therefore, rather than focusing on the centre, our priority target is the northern margin of the geochemical anomaly. It will be exciting to drill-test this sizeable anomaly and we look forward to cost-effectively advancing Jean Marie and appreciate the project’s location, ease of access and nearby infrastructure.”*

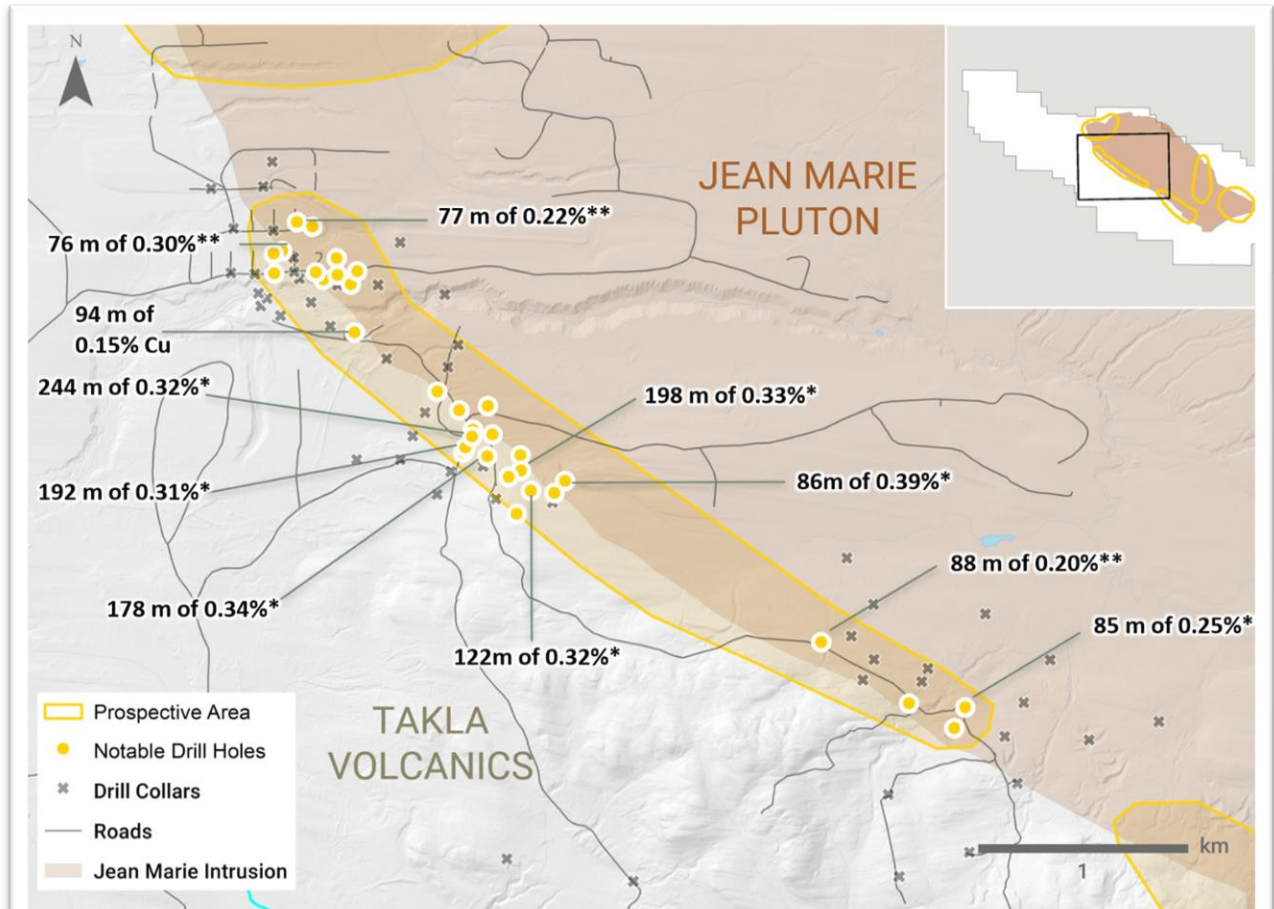
### **Target 1**

Target 1 is located in the area of the historical A and B Zones. Although previous drilling at both of these zones encountered widespread copper mineralization, drilling was shallow and the area between was only tested with three shallow holes. Of particular importance in this area is the presence of a mineralized hydrothermal breccia that was encountered in drill hole J97-11 and occurred within an interval that graded 1.19% copper, and 5.74 g/t silver over 27 metres. Drilled to a depth of only 276 metres, J97-11 is one of the deepest holes on the property and the presence of a mineralized brecciated intrusion suggests that there is the potential for a mineralized hydrothermal system at depth in this area.

### TARGET 1 - HISTORICAL DRILLING SCRATCHED THE SURFACE



Cross Section Target 1



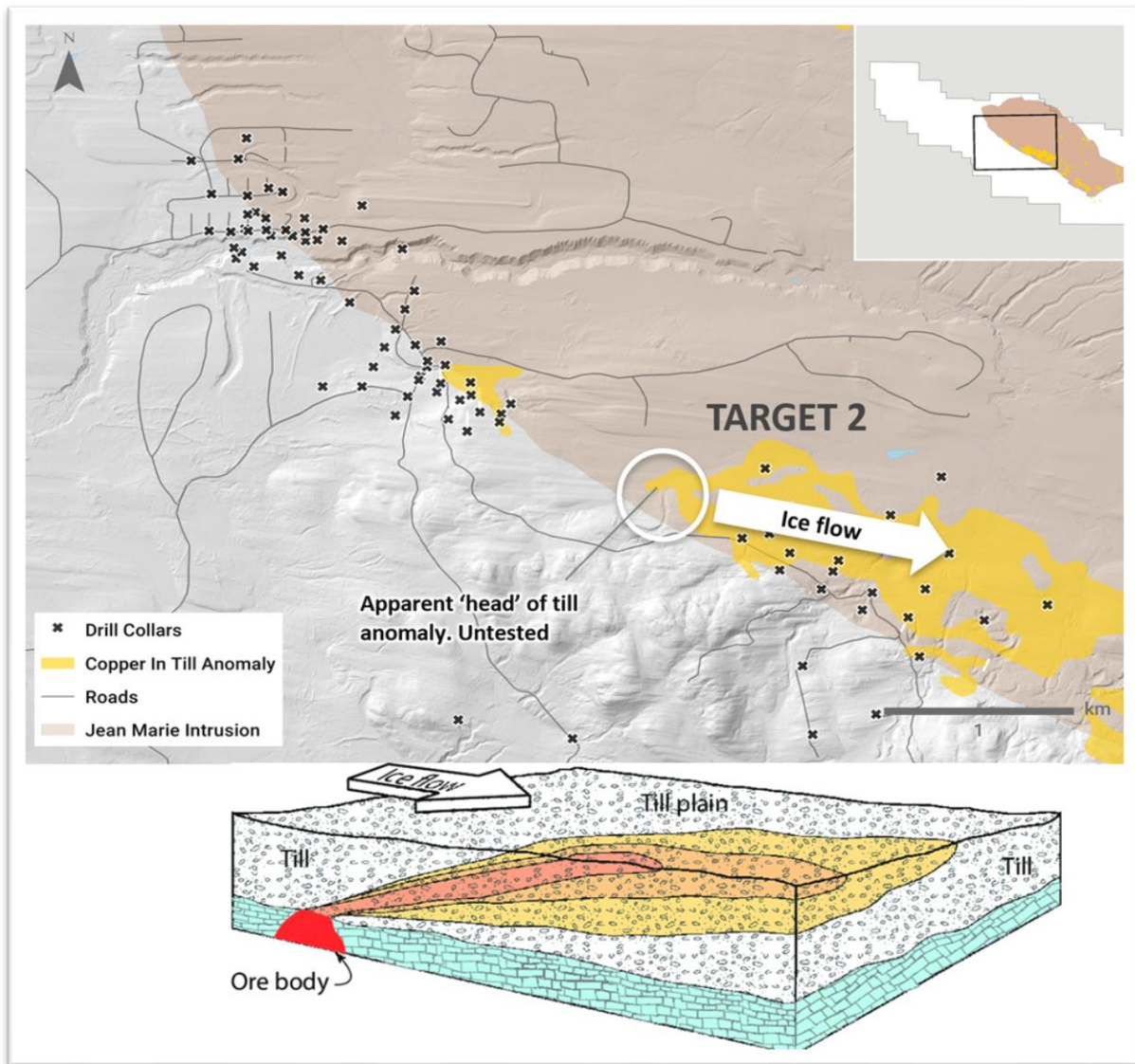
\* - Cu (Eq): Copper Equivalent (Cu + Mo + Ag) Calculated on a pure price basis (September, 2021)

\*\* - Average Cu eq values calculated for the entire hole

Plan View of Target Areas 1 & 2

## Target 2

The area of Target 2 is immediately to the northwest of the most significant copper/molybdenum soil anomaly on the property. This geochemical anomaly is characterized by a large number of samples greater than 1000 ppm copper and 100 ppm molybdenum in till over 3 km length. The center of this soil geochemical anomaly was drilled in the 1970's, only one hole returned significant copper mineralization (JPH74-15) averaging 0.2% copper over the entire length of the hole. This hole is the closest hole drilled to PEMC's interpreted bedrock source of copper mineralization. The LiDAR survey and surficial mapping completed by PEMC during 2021 clearly demonstrate that the till was transported with the ice flowing from west to east, pointing to a bedrock source of mineralization at the head of the geochemical anomaly. This area has never been drill tested.



*Plan View of Target 2*

## **Summary of Work Completed During 2021**

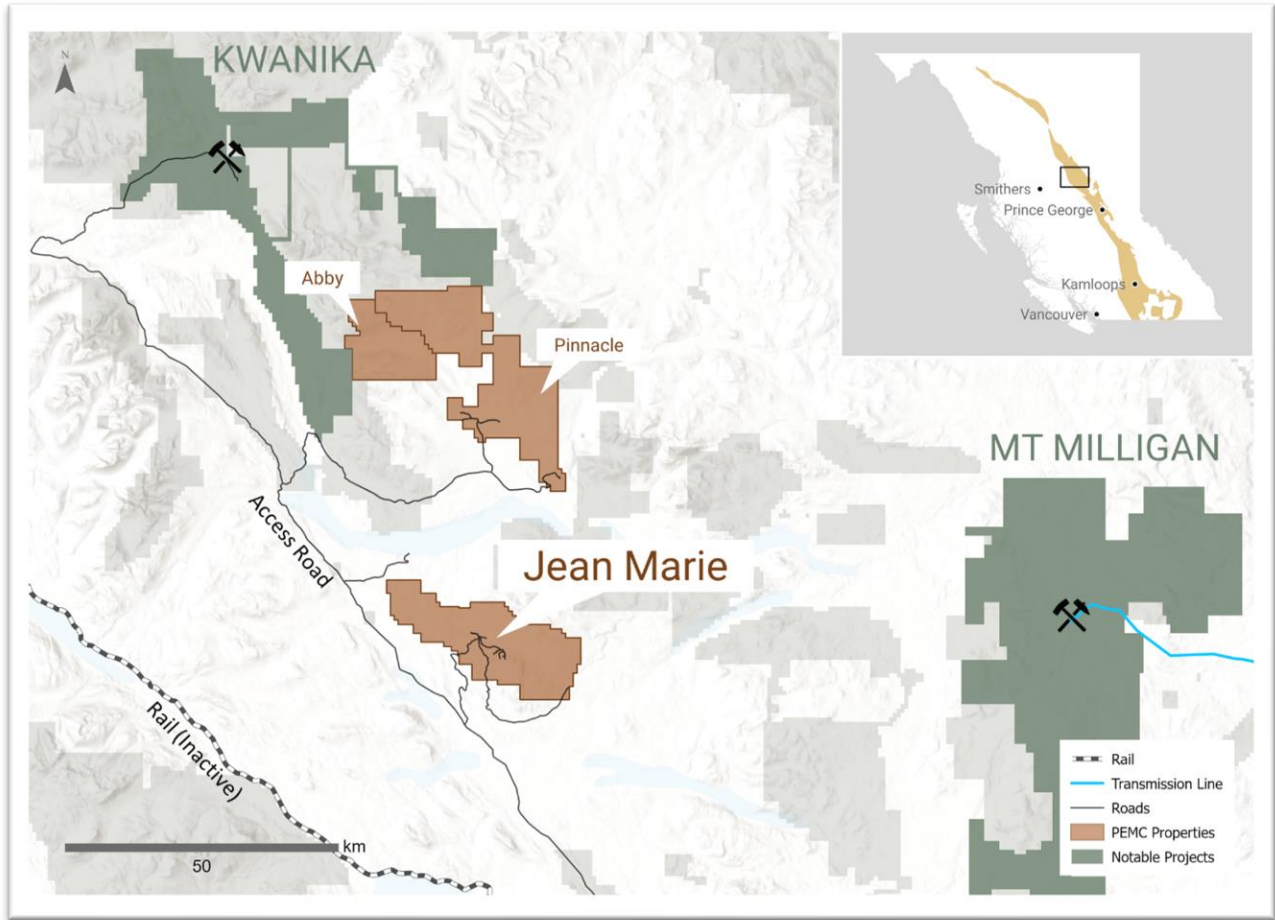
2021 saw the first high-resolution, magnetic gradient, radiometric, and VLF-EM airborne geophysical survey completed at Jean Marie. This was followed up with a LiDAR survey and acquisition of high-resolution satellite imagery. Using the LiDAR data and high-resolution imagery, a surficial mapping program was completed by Quaternary Geology expert, Derek Turner. Results from this work provided detailed ice flow direction indicators which were then incorporated into PEMC's surface geochemical analysis. A detailed review of historical drill core was completed, in addition to the collection of over 600 soil geochemical samples. The land position at Jean Marie was expanded from 7,357 hectares to over 12,600 hectares.

## **About Jean Marie**

The Jean Marie property is a copper-molybdenum-silver-gold porphyry prospect located 50 km south of Northwest Copper's Kwanika Copper-Gold deposit and 50 km west of Centerra Gold's Mt. Milligan Copper-Gold Mine in central BC. The property covers over 12,000 hectares and has multiple mineralized zones which are open for expansion with drilling. Drill results demonstrate kilometer-scale base and precious metal mineralization over a large, under-explored property with multiple untested diamond-drill targets.

Drilling in the 1990's returned near surface intercepts of up to 244m of 0.28% copper, 0.007% molybdenum and 1.1 g/t silver, in a broad area located close to the pluton, volcanic contact. Two of the holes intercepted a distinct quartz breccia which returned up to 27 metres of 1.19% copper, and 5.74 g/t silver.

Drilling was limited to a maximum depth of 288 metres below surface and mineralization remains unbounded at depth and along strike to the NW and SE. Of the 96 holes drilled on the property since the 1970's 76 are less than 130 metres in depth with numerous short holes that were mineralized over the entire length.



*Jean Marie Project Location*

### **About Atlas Drilling Ltd.**

Atlas Drilling Ltd is a large and well-respected drill contractor located in Kamloops, BC, Canada. Atlas Drilling Ltd. has been servicing drill projects in British Columbia for over twenty five years. It is full service drill company with a large amount of support equipment including bulldozers, skidders, excavators, water trucks and truck-trailer for transporting equipment. Atlas Drilling has a helicopter to transport their crew in and out of job sites that are not accessible by trucks.

### **Qualified Person**

Thomas Hawkins, P.Geo., Vice President of Exploration for the Company, serves as a qualified person as defined by NI 43-101 and has reviewed the scientific and technical information in this news release, approving the disclosure herein.

## About Pacific Empire

Pacific Empire is a copper exploration company based in Vancouver, British Columbia and trades on the TSX Venture Exchange under the symbol PEMC. The Company's strong portfolio of gold-enriched copper projects in British Columbia, is the culmination of perseverance through one of the longest bear markets in the resource industry.

British Columbia is a "Green" copper jurisdiction with abundant hydroelectric power, access and infrastructure in close proximity to the end market.

ON BEHALF OF THE BOARD,

***"Brad Peters"***

President and Chief Executive Officer

Pacific Empire Minerals Corp.

Tel: +1-604-356-6246

[brad@pemcorp.ca](mailto:brad@pemcorp.ca)

[www.pemcorp.ca](http://www.pemcorp.ca)

*Neither the TSX Venture Exchange nor its Regulation Services Provider (as that term is defined in the policies of the TSX Venture Exchange) accepts responsibility for the adequacy or accuracy of this release.*

### Forward-Looking Statements

*Information set forth in this news release may involve forward-looking statements under applicable securities laws. Forward-looking statements are statements that relate to future, not past, events. In this context, forward-looking statements often address expected future business and financial performance, and often contain words such as "anticipate", "believe", "plan", "estimate", "expect", and "intend", statements that an action or event "may", "might", "could", "should", or "will" be taken or occur, or other similar expressions. All statements, other than statements of historical fact. By their nature, forward-looking statements involve known and unknown risks, uncertainties and other factors which may cause our actual results, performance or achievements, or other future events, to be materially different from any future results, performance or achievements expressed or implied by such forward-looking statements. Such factors include, among others, the following risks: the need for additional financing; operational risks associated with mineral exploration; fluctuations in commodity prices; title matters; environmental liability claims and insurance; reliance on key personnel; the potential for conflicts of interest among certain officers, directors or promoters with certain other projects; the absence of dividends; competition; dilution; the volatility of our common share price and volume and the additional risks identified the management discussion and analysis section of our interim and most recent annual financial statement or other reports and filings with the TSX Venture Exchange and applicable Canadian securities regulations. Forward-looking statements are made based on management's beliefs, estimates and opinions on the date that statements are made, and the Company undertakes no obligation to update forward-looking statements if these beliefs, estimates and opinions or other circumstances should change, except as required by applicable securities laws. Investors are cautioned against attributing undue certainty to forward-looking statements.*