



Pacific Empire Presenting at Metals Investor Forum in Vancouver and Preliminary Data from Airborne MobileMT™ Survey at Trident

May 9, 2024 – Vancouver, BC, Canada – Pacific Empire Minerals Corp. (TSXV: PEMC) (“Pacific Empire”, “PEMC” or the “Company”), a British Columbia copper-gold explorer, announces that the Company will be presenting at The Metals Investor Forum in Vancouver on May 10th and 11th. In addition, the Company is pleased to announce that the recently completed Airborne Mobile Magnetotelluric (“MT”) geophysical survey, completed over the Trident and Pinnacle properties was successful in identifying a significant conductivity anomaly at depth on the Trident property.

Metals Investor Forum Vancouver

The annual conference will take place in-person at the Paradox Hotel in downtown Vancouver on May 10th and 11th. Brad Peters, President & CEO, will be presenting on May 10th at 2:20 pm Pacific Standard time.

For more information and/or to register for the conference please visit: <https://metalsinvestorforum.com/>

Airborne MobileMT™ Survey at Trident

Highlights

- MT survey identified a conductivity anomaly at depth on the Trident property.
- The completed survey totals 164 line-kilometres and provides coverage of the primary target area (historical assays at Trident which include DDH-1971-13: 70.07m @ 0.69% Cu, DDH 2007-2: 100.00m @ 0.59% Cu and 0.18 g/t Au including 2.00m @ 2.73% Cu and 0.36 g/t Au).
- The MT survey also covered an additional target area located on PEMC’s 100% owned Pinnacle Property situated directly west and adjacent to Trident.

Pacific Empire has received the results from the Airborne Mobile Magnetotelluric Survey at its flagship Trident and Pinnacle projects. Preliminary results have identified a significant conductivity anomaly on the Company’s Trident property at depth (Figures 2, 3 & 4). This low resistivity (high conductivity) anomaly represents a compelling exploration target that is further supported by favorable geology in nearby historic drilling. The Company will soon announce the results of 3D modelling and subsequent integration of the MT survey into the existing geological and geophysical datasets as the Company works towards refining drill targets for future diamond drilling at Trident.

Pacific Empire's President and CEO, Brad Peters: "The preliminary data is very encouraging, we are currently reviewing the data and proceeding with its integration into our historical induced polarization (“IP”), airborne magnetic and historical drilling datasets to develop a comprehensive 3D model. The presence of resistivity lows/conductivity highs at depth associated with “fingers” protruding have the potential to represent fluid conduits that are inferred to be essential to the formation of mineral deposits. The MT survey results provide compelling additional support to our current understanding of the mineralizing system at Trident. This important step serves to strengthen our conviction and allows the exploration team to effectively target future drill programs.

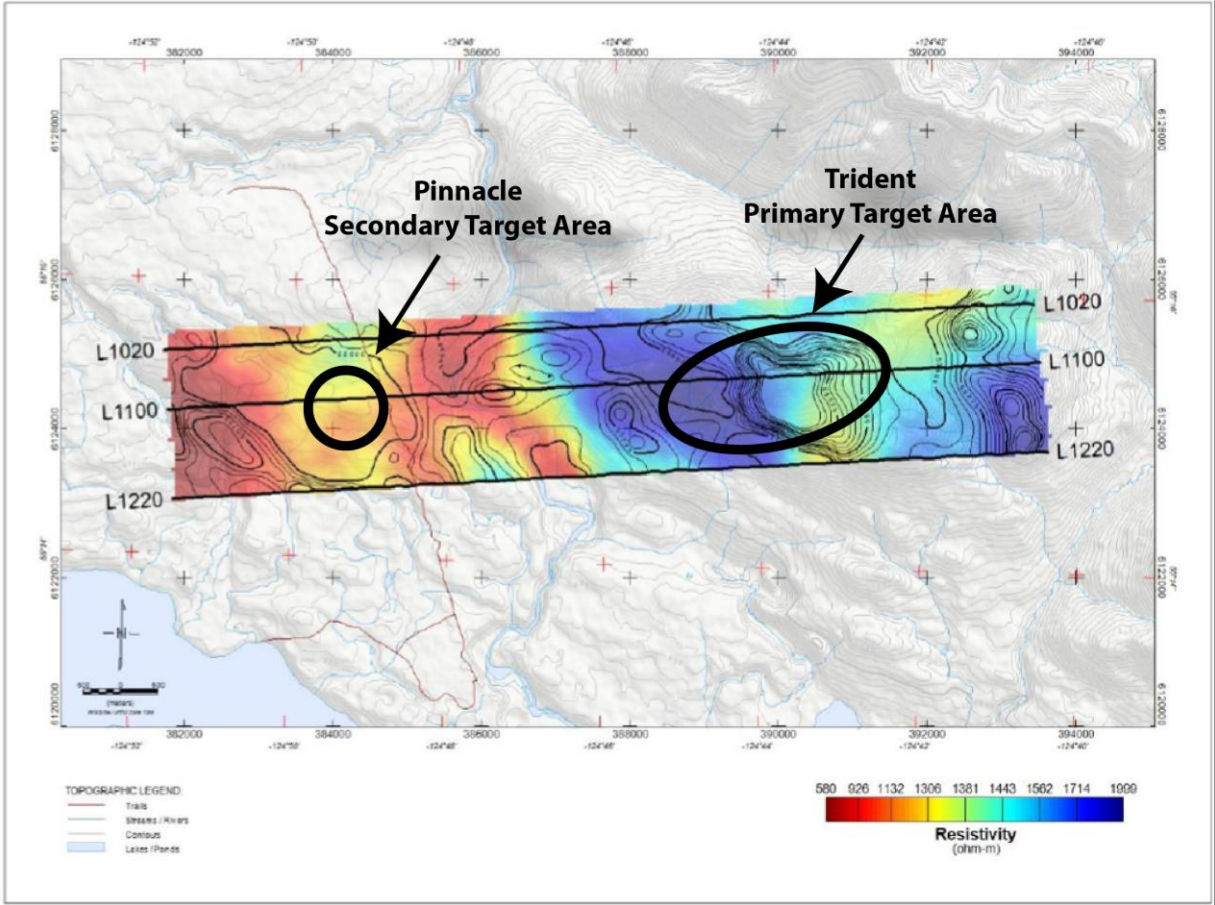


Figure 1 - Resistivity at 600m ASL with overlapped contours of magnetic anomalies.

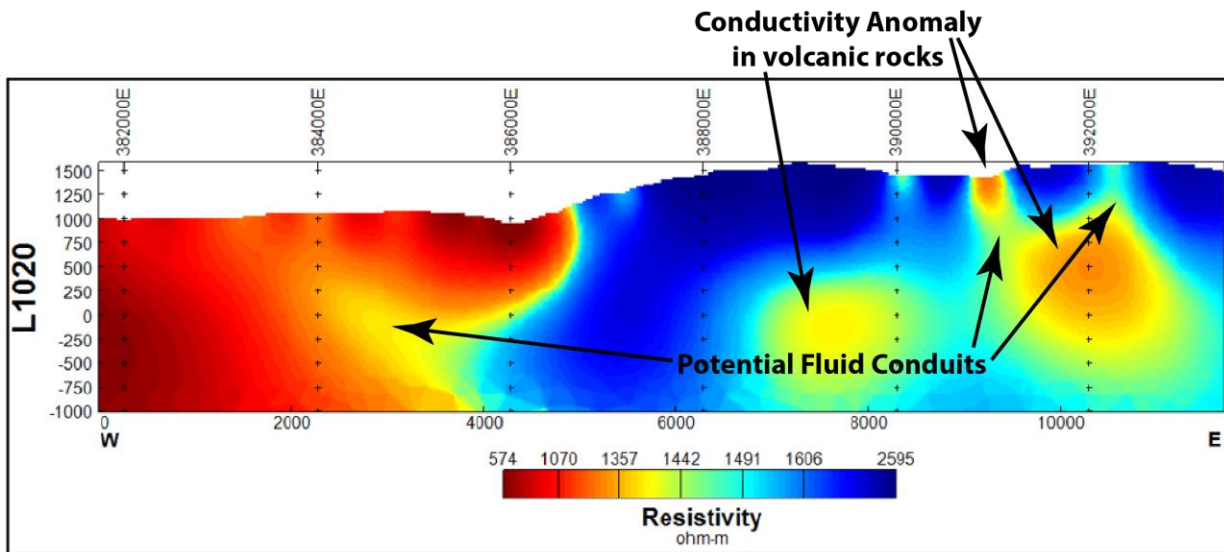


Figure 2 - Resistivity section along the L1020 survey line (in Figure 1)

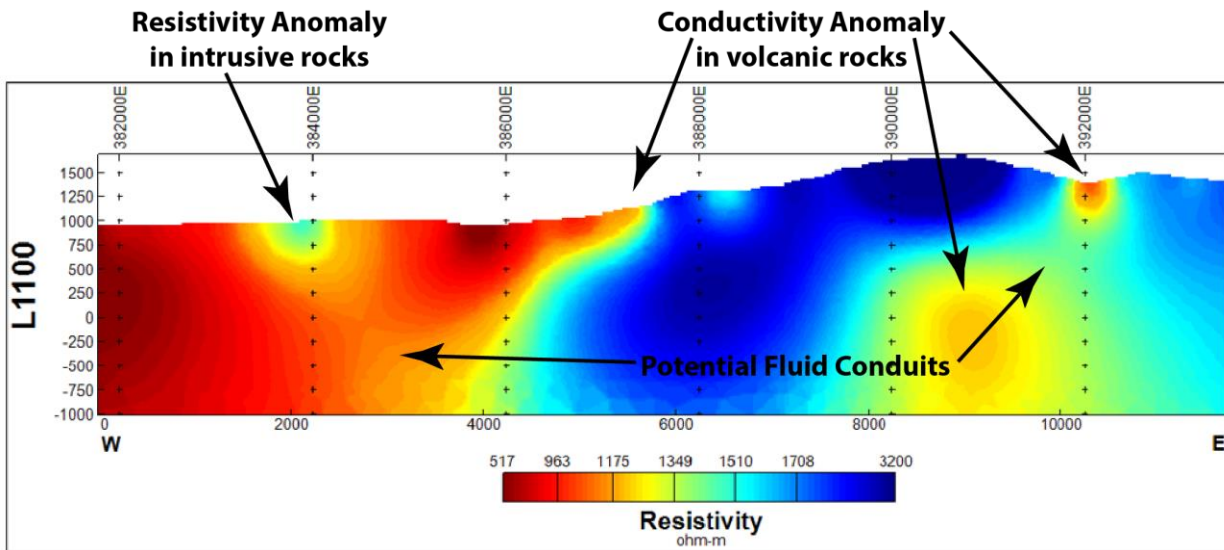


Figure 3 - Resistivity section along the L1100 survey line (in Figure 1)

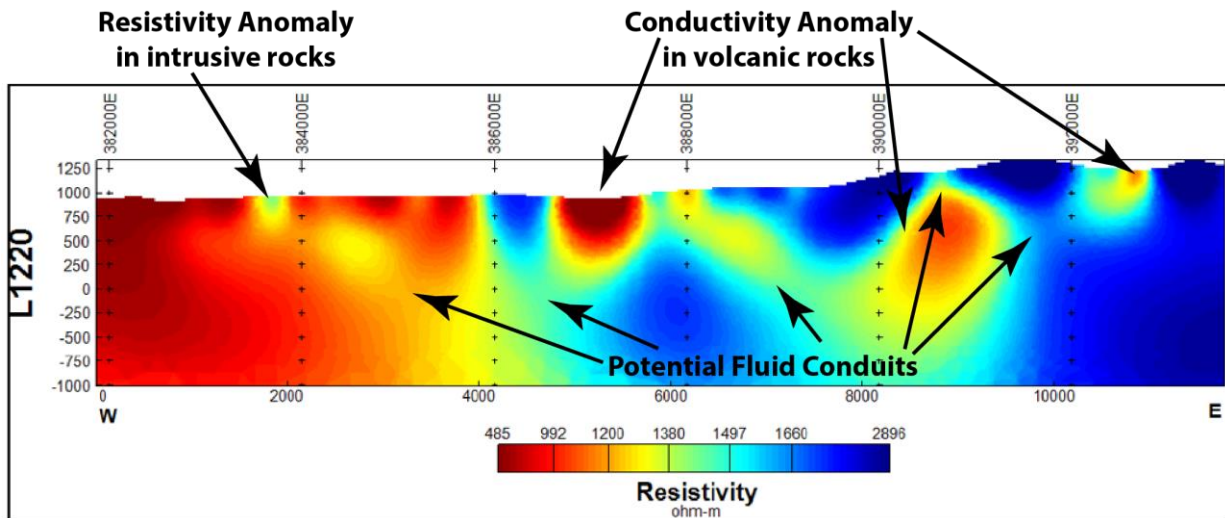


Figure 4 - Resistivity section along the L1220 survey line (in Figure 1)

About Trident

The Trident property is an early exploration stage property hosting an alkalic porphyry copper-gold-silver prospect with district-scale potential that is accessible by vehicle. The property is located approximately 50 km to the southeast of NorthWest Copper Corp.'s Kwanika Deposit and 50 km to the northwest of Centerra Gold's Mt. Milligan Mine. The property covers 6,618 hectares endowed with well-established logging roads providing important efficient access to conduct exploration programs.

Copper mineralization on the property was first discovered in 1969, while exploration crews were following up on anomalous stream sediment samples. The following year, Falconbridge optioned the property and over the next two years completed IP and magnetic surveys, geological mapping, soil sampling and diamond drilling. This work ultimately led to the discovery of the A Zone.

Additional exploration programs were completed by Kookaburra Gold Corp. from 1988 through 1991, Solomon Resources Ltd., from 2006 through 2008. In 2013, PEMC optioned the property and in 2014, in turn, PEMC optioned the property to Oz Minerals which completed during that same year, an IP survey and completed a two drillhole, diamond drill program at Trident.

In 2022, Pacific Empire acquired a 100% interest in the property in exchange for granting the vendors a 2% net smelter return royalty ("NSR"). One-half (1%) of the 2% NSR which may be purchased for \$500,000 by Pacific Empire.

Prior to 2014, known mineralization on the property was believed to be associated with fracture and/or shear zones structures striking 120 degrees and dipping 75 degrees towards the northeast. A review of historical drill core by the Pacific Empire exploration team has led to a much different interpretation with respect to the nature of known mineralization on the property. The most important observation made was the determination of the presence of hornblende-feldspar monzonite porphyry intrusions detected within drill core obtained from the A Zone. These types of porphyry intrusions are typically characterized by sheeted quartz sulphide veins hosting disseminated chalcopyrite and bornite residing immediately adjacent to and within the porphyry dikes. Other observations include the highest grades noted in historical drilling can be seen to be directly associated with intervals where such porphyry intrusions occur.

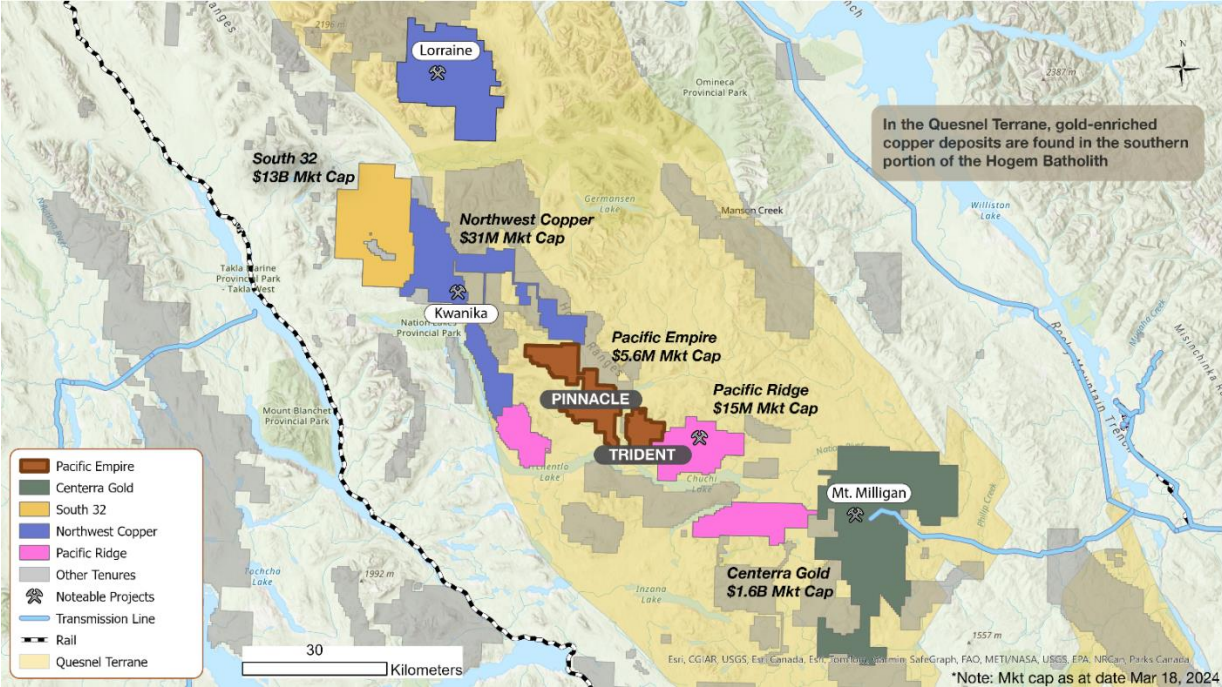


Figure 5 – Regional Land Position and Significant Companies

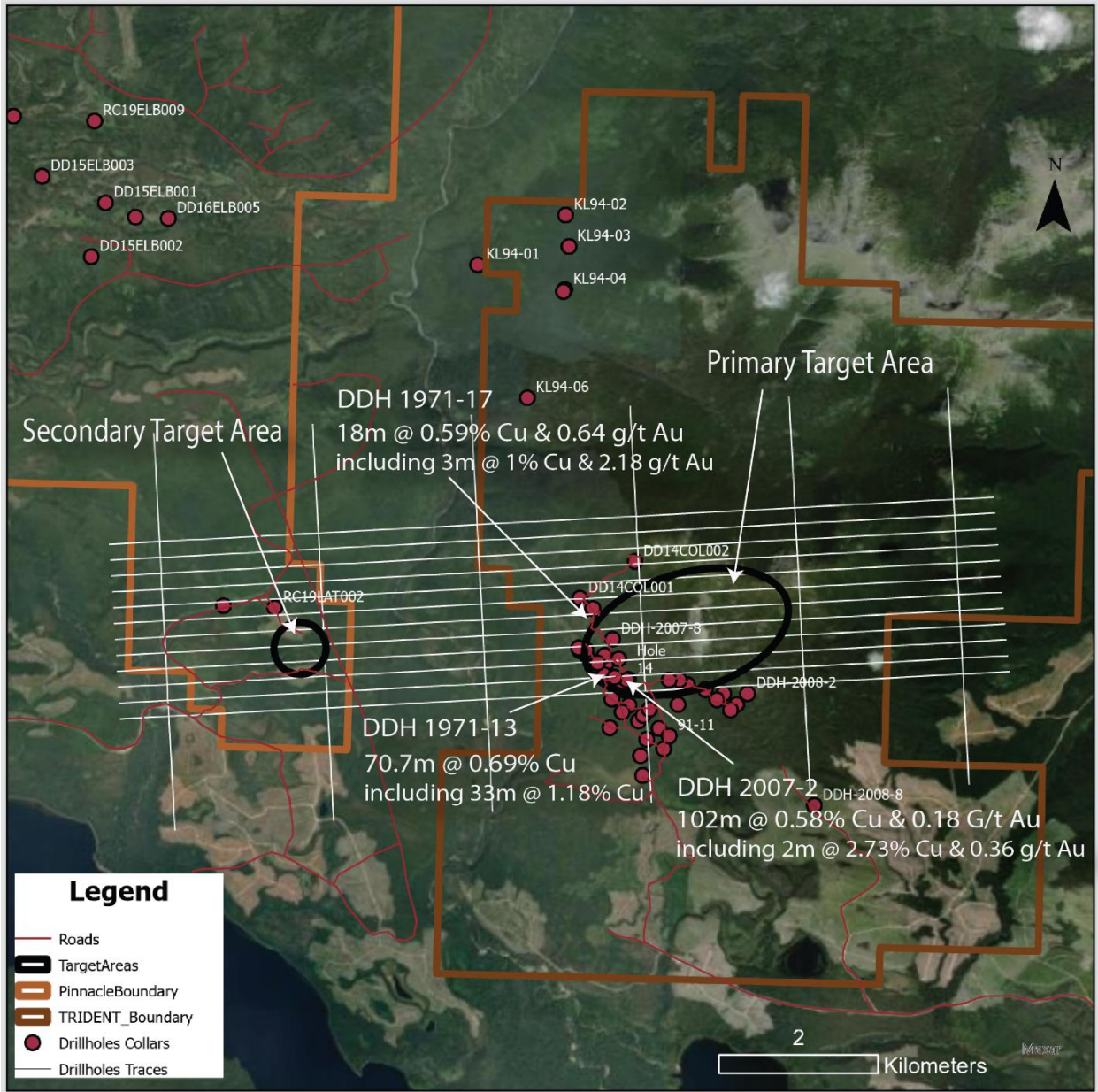


Figure 6 – Location of completed Magnetotelluric Survey

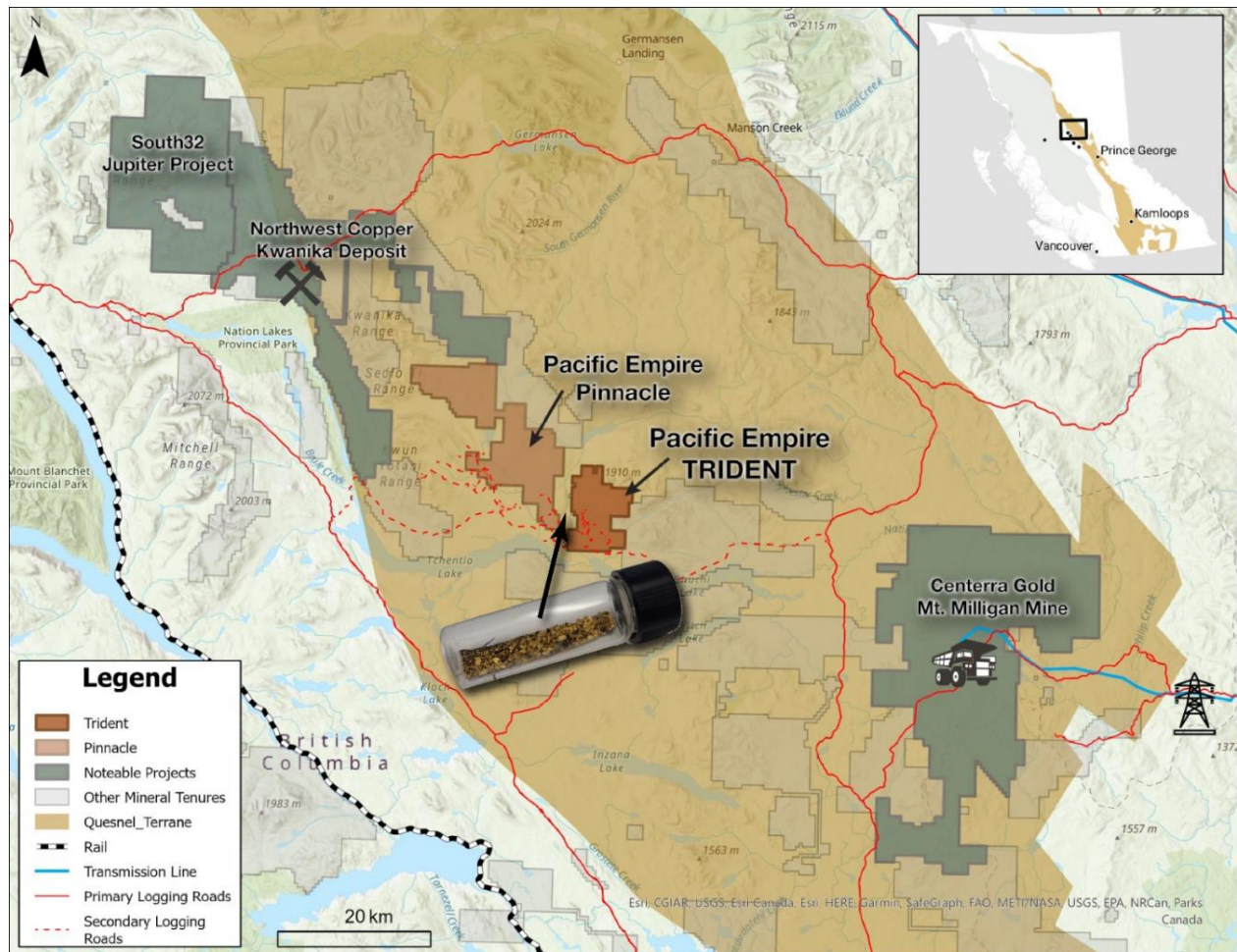


Figure 7 - Soth Hagem Copper-Gold Belt

“Between our 100% owned Trident and Pinnacle projects runs the Klawli river. The gold flakes and nuggets in the vial displayed on the map were collected from that location on the Klawli river. It is this and other geochemical evidence gathered by the PEMC exploration team which leads us to postulate the potential for a gold-enriched copper system nearby on either Trident, Pinnacle, or possibly both projects. To date, visible gold has been observed in outcrops at Trident, placer gold discovered in the nearby Klawli river gravels, as well gold has been detected in drill core from Pinnacle. All three of these known occurrences of gold and their respective locations suggests there may be a shallow buried, large scale, gold-enriched, copper porphyry deposit within our district scale land package,” commented Brad Peters, President, CEO and Director of Pacific Empire.

Hole ID	From (m)	To (m)	Length (m)	Cu (%)	Au (g/t)
DDH 1971-09	6.7	78.0	71.3	0.46	NA
<i>incl.</i>	9.1	33.5	24.4	1.06	NA
DDH 1971-11	5.8	93.3	87.5	0.24	NA
<i>incl.</i>	5.8	30.5	24.7	0.35	NA
DDH 1971-13	27.4	97.5	70.1	0.69	NA
<i>incl.</i>	42.7	76.1	33.4	1.18	NA
DDH 1971- 17	36.6	54.8	18.3	0.59	0.64
<i>incl.</i>	42.7	45.7	3.1	1.08	0.78
<i>incl.</i>	51.8	54.8	3.0	1.00	2.18
DDH 1971- 21	115.8	170.7	54.9	0.67	NA
<i>incl.</i>	125.0	131.0	6.0	0.62	0.52
<i>incl.</i>	134.1	137.1	3.0	0.96	0.72
<i>incl.</i>	143.3	146.3	3.0	0.72	0.68
2007-01	42.0	92.0	50.0	0.60	0.13
<i>incl.</i>	58.0	68.0	10.0	1.18	0.34
2007-02	58.0	160.0	102.0	0.59	0.18
<i>incl.</i>	68.0	118.0	50.0	0.72	0.24
<i>incl.</i>	116.0	118.0	2.0	0.80	1.05
<i>incl.</i>	150.0	152.0	2.0	2.73	0.36
2007-03	150.0	270.0	120.0	0.27	0.14
<i>incl.</i>	216.0	246.0	30.0	0.62	0.33
<i>incl.</i>	228.0	230.0	2.0	1.22	1.02
2007-04	91.0	143.0	52.0	0.56	0.26
<i>incl.</i>	131.0	135.0	4.0	0.98	0.66
2008-01	17.0	47.0	30.0	0.43	0.51
<i>incl.</i>	31.0	33.0	2.0	0.59	1.18
<i>incl.</i>	45.0	47.0	2.0	0.21	1.10

Table 1 - Highlights from Historical Drilling at Trident

About Pinnacle

The Pinnacle project is located 60 km to the west of Centerra Gold's Mt. Milligan Copper-Gold Mine and 30 km to the southeast of NorthWest Copper's Kwanika Copper-Gold Deposit in a proven copper-gold porphyry district. Access to the Pinnacle is by road including a new and expanding network of logging roads and trails throughout the main target areas. This improved access is a significant development and is anticipated to contribute to cost effective drill support and provides additional bedrock exposure.

“Over the past 2 years significant logging operations have developed an extensive road network that now covers the entirety of the southern half of the property providing new outcrop exposure and efficient access. The 2023 forest fires dramatically affected the property resulting in significantly improved access to the property,” commented Brad Peters, President, CEO and Director of Pacific Empire.

Qualified Person

Kristian Whitehead, P.Geo., serves as a qualified person as defined by NI 43-101 and has reviewed the scientific and technical information in this news release, approving the disclosure herein.

About Pacific Empire

Pacific Empire is a copper exploration company based in Vancouver, British Columbia and trades on the TSX Venture Exchange under the symbol PEMC. The Company has a district scale land position in north-central British Columbia totaling 22,541 hectares.

British Columbia is a “Green” copper jurisdiction with abundant hydroelectric power, access and infrastructure in close proximity to the end market.

ON BEHALF OF THE BOARD,

“Brad Peters”

President, Chief Executive Officer and Director

Pacific Empire
Minerals Corp. Tel:
+1-604-356-6246
brad@pemcorp.ca

www.pemcorp.ca

Neither the TSX Venture Exchange nor its Regulation Services Provider (as that term is defined in the policies of the TSX Venture Exchange) accepts responsibility for the adequacy or accuracy of this release.

Forward-Looking Statements

Information set forth in this news release may involve forward-looking statements under applicable securities laws. Forward-looking statements are statements that relate to future, not past, events. In this context, forward-looking statements often address expected future business and financial performance, and often contain words such as "anticipate", "believe", "plan", "estimate", "expect", and "intend", statements that an action or event "may", "might", "could", "should", or "will" be taken or occur, or other similar expressions. All statements, other than statements of historical fact, are forward-looking statements. By their nature, forward-looking statements involve known and unknown risks, uncertainties and other factors which may cause our actual results, performance or achievements, or other future events, to be materially different from any future results, performance or achievements expressed or implied by such forward-looking statements. Such factors include, among others, the following risks: the need for additional financing; operational risks associated with mineral exploration; fluctuations in commodity prices; title matters; environmental liability claims and insurance; reliance on key personnel; the potential for conflicts of interest among certain officers, directors or promoters with certain other projects; the absence of dividends; competition; dilution; the volatility of our common share price and volume and the additional risks identified in the management discussion and analysis section of our interim and most recent annual financial statement or other reports and filings with the TSX Venture Exchange and applicable Canadian securities regulations. Forward-looking statements are made based on management's beliefs, estimates and opinions on the date that statements are made, and the Company undertakes no obligation to update forward-looking statements if these beliefs, estimates and opinions or other circumstances should change, except as required by applicable securities laws. Investors are cautioned against attributing undue certainty to forward-looking statements.